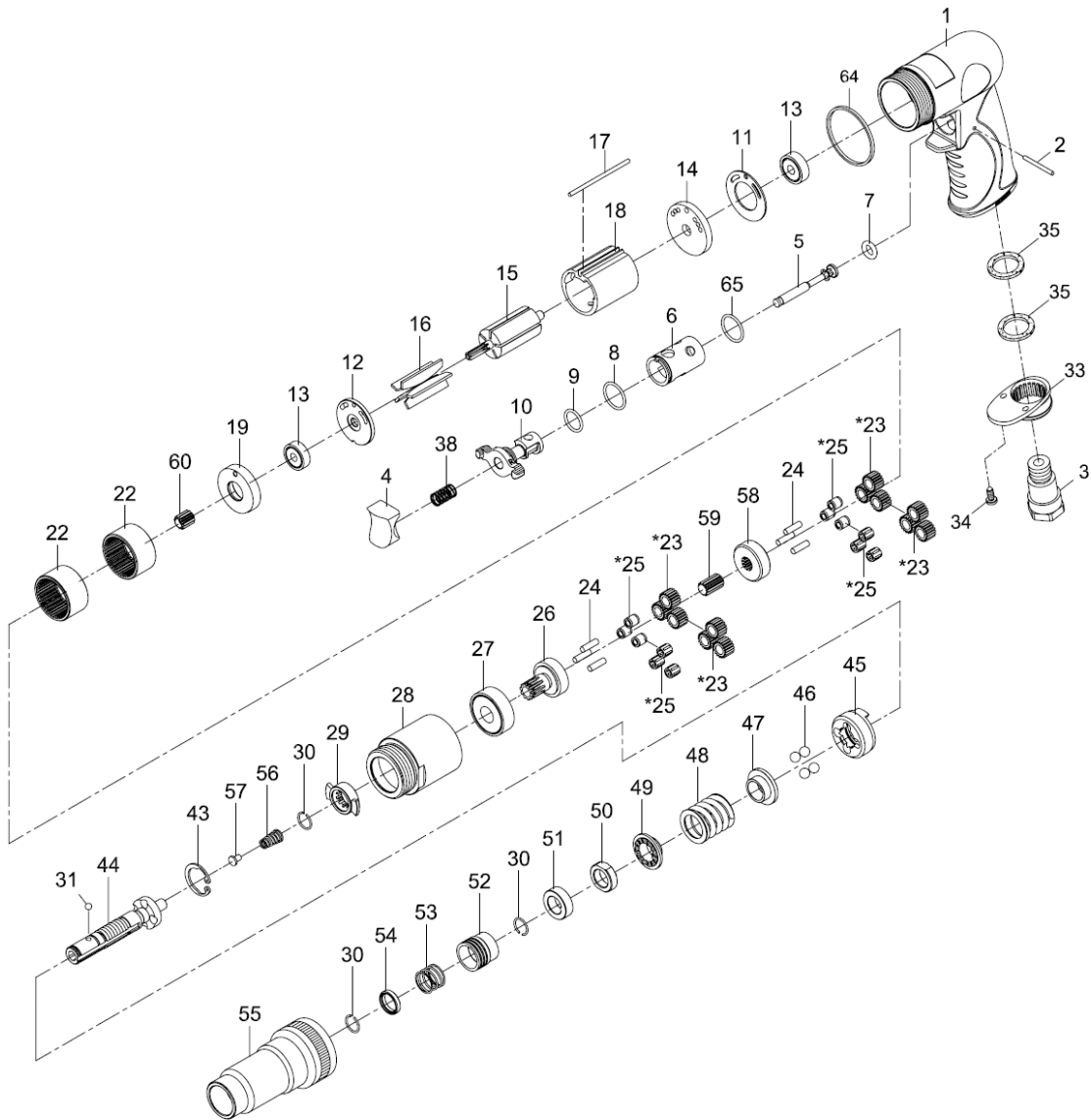


SENCO

SEN611C

SCREWDRIVER ADJUSTABLE CLUTCH



Index No.	Parts No.	Description	Index No.	Parts No.	Description
1	75-7253P01	Motor Housing	29	80229	Drive Dog
2	822202	Pin (2.5x26.8)	30	80230	Retaining Ring (3)
3	75-725303	Air Inlet	31	40145	Steel Ball (1/8")
4	75-725304	Trigger	33	70110-21	Exhaust Diffuser
5	75-725305	Valve Stem	34	40309	Screw (2) (TS2.9)
6	75-725306	Valve Bushing	35	75-725350	Damping Material (2)
7	72807-12	O-Ring (4.5x2.5)	38	82208	Valve Spring
8	795820	O-Ring (15.5x1.5)	43	80231	Snap Ring (RTW-21)
9	80209	O-Ring (12x1.6)	44	80232	Cam Spindle
10	75-725310	Reverse Lever	45	80234	Clutch
11	80211	Motor Gasket	46	80235	Steel Ball (4) (1/4")
12	80214	End Plate	47	80236	Thrust Washer
13	030113	Ball Bearing (2) (626zz)	48	80237	Spring
14	75-725314	Rear End Plate	49	80238	Washer
15	80215-12	Rotor	50	80239	Adjust Nut
16	80216	Rotor Blade (5)	51	80240	Spacer
17	75-725317	Pin (2.5x57)	52	80242	Ball Retainer
18	80218-22	Cylinder	53	80243	Spring
19	80219	Front End Plate	54	80244	Washer
22	80222	Internal Gear (2)	55	80241	Clutch Housing
*23	70423-11	Planet Gear (6)	56	80220	Spring
	70423-14	Planet Gear (6)	57	80221	Spring Gulde
24	30124	Pin (6) (4x13.8)	58	70427	Reduction Spindle
*25	70425	Bushing (6)	59	70421	Center Gear
	070428	Needle Bearing (6) (4x6x8)	60	70420	Pinion Gear
26	80326	Work Spindle	64	75-725351	Decoratlon Ring
27	080227	Ball Bearing (6201z)	65	72009	O-Ring (15.7x1.7)
28	80328	Clamp Nut			

* Optional Parts

83-7253P-0001